

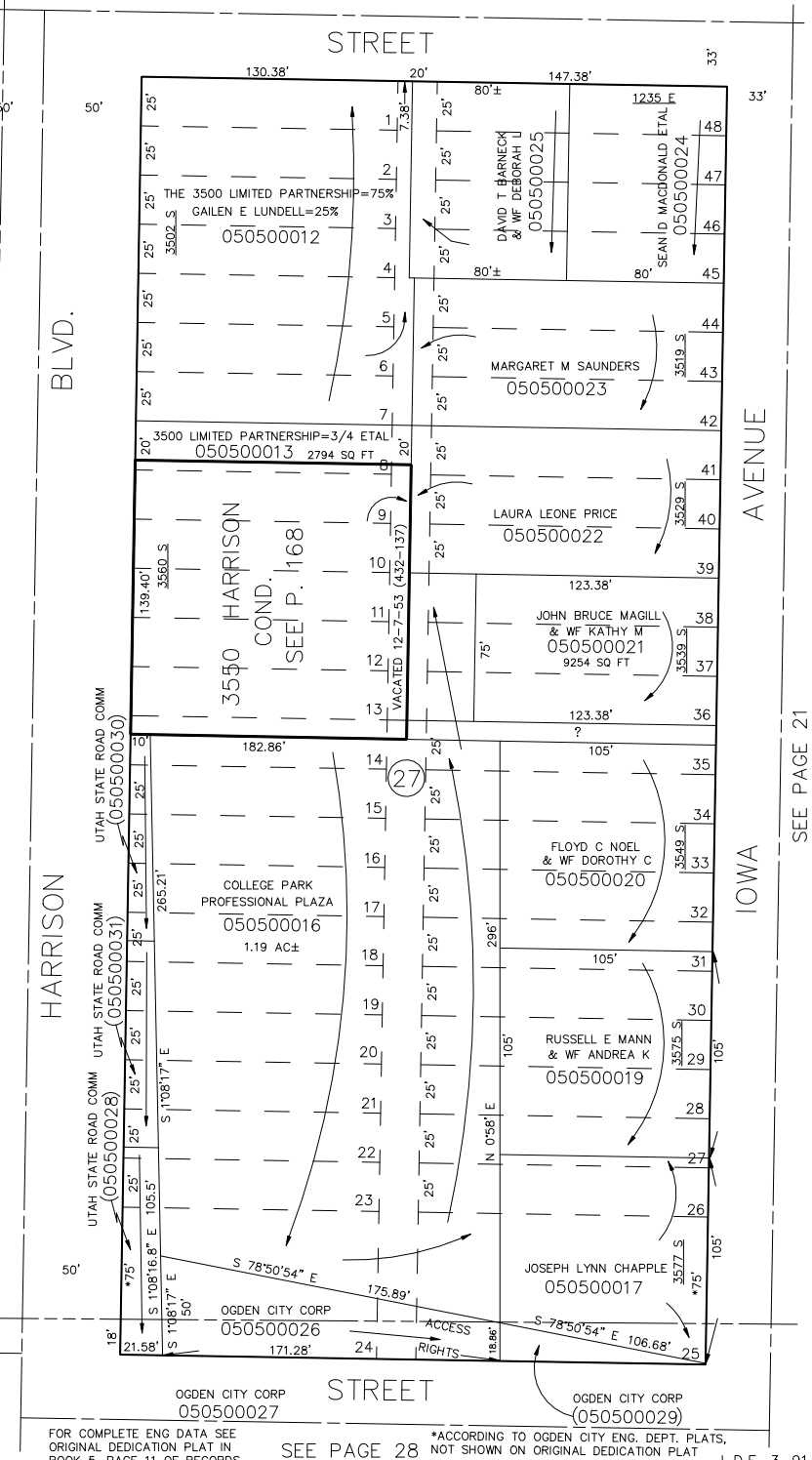
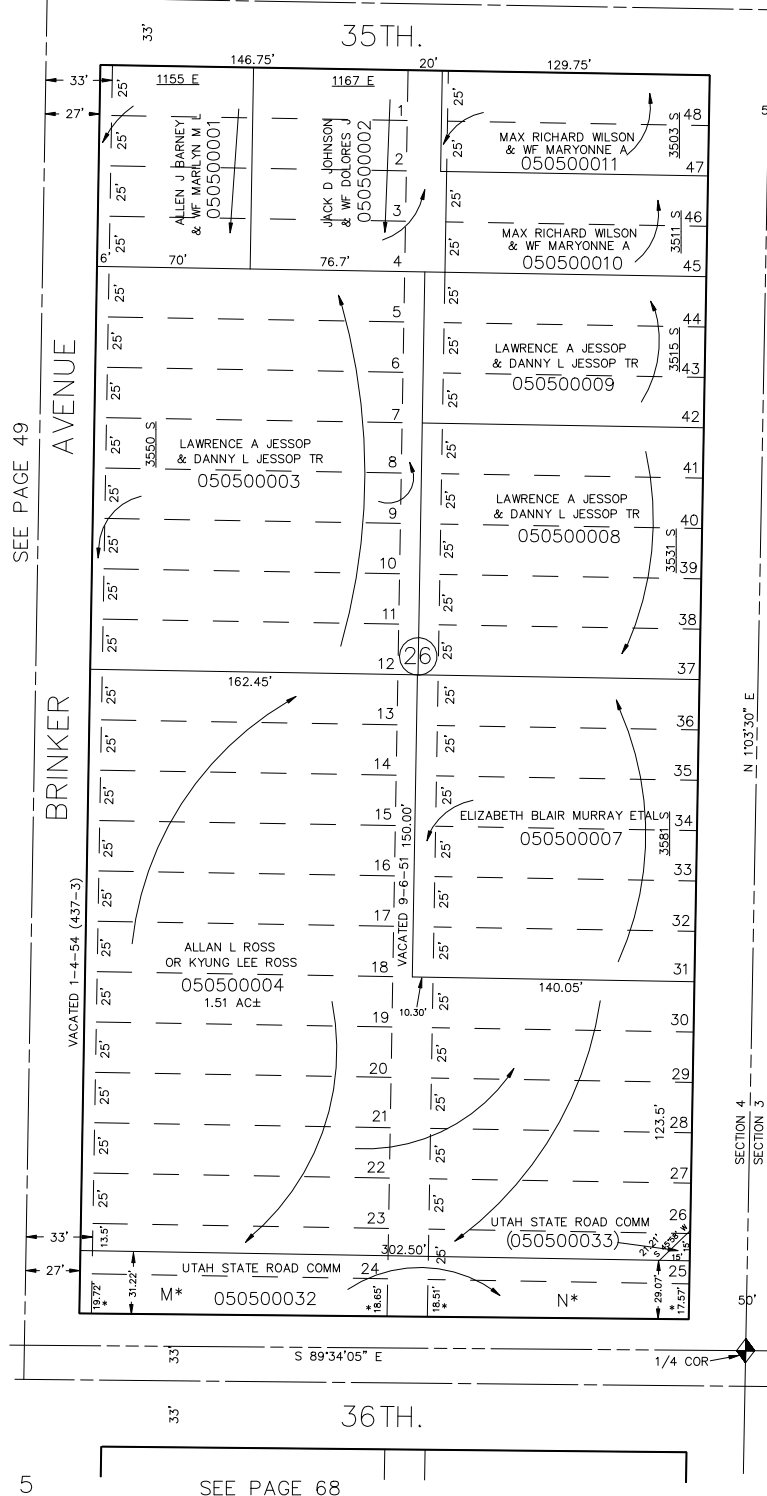
PART OF THE N. HALVES OF SEC. 3 & 4, T.5N., R.1W., S.L.B. & M.
BLOCKS 26 & 27 NELSON PARK ADDITION

IN OGDEN CITY
SCALE 1" = 50'

TAXING UNIT: 25

SEE PAGE 43

SEE PAGE 20



SEE PAGE 68

SEE PAGE 28

*ACCORDING TO OGDEN CITY ENG. DEPT. PLATS,
NOT SHOWN ON ORIGINAL DEDICATION PLAT

L.D.F. 3-91